

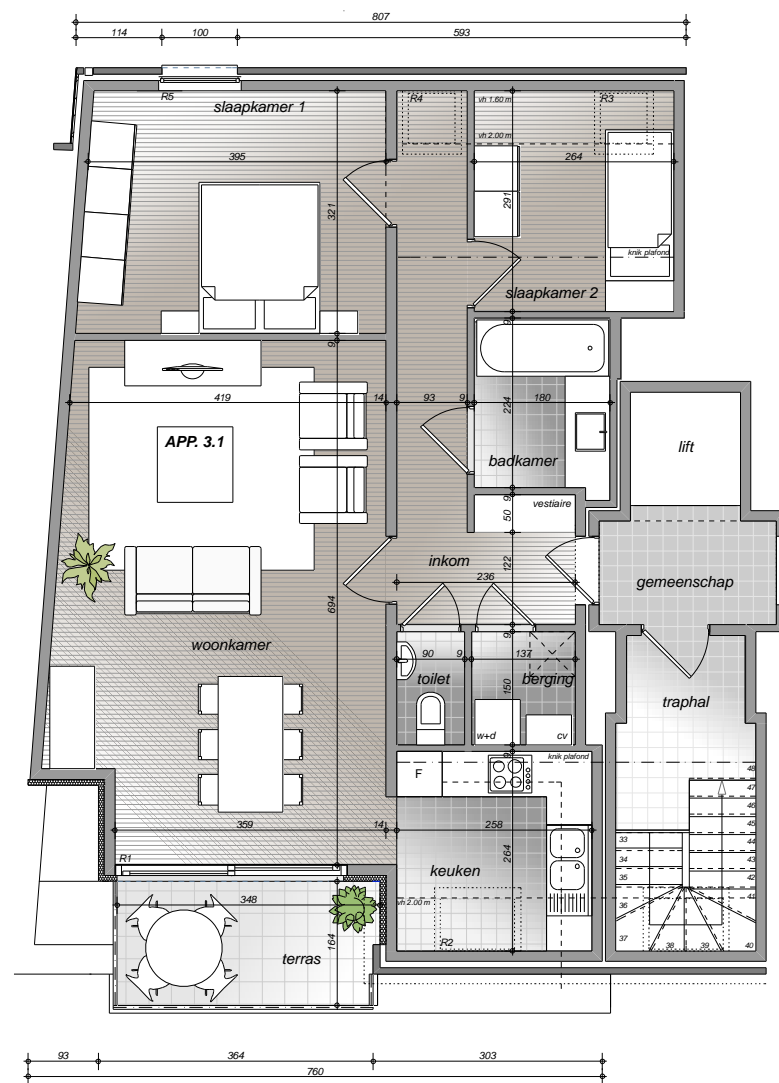
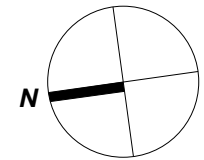
**VERDIEPING 3**  
**APPARTEMENT 3.1**

**bruto oppervlakte**

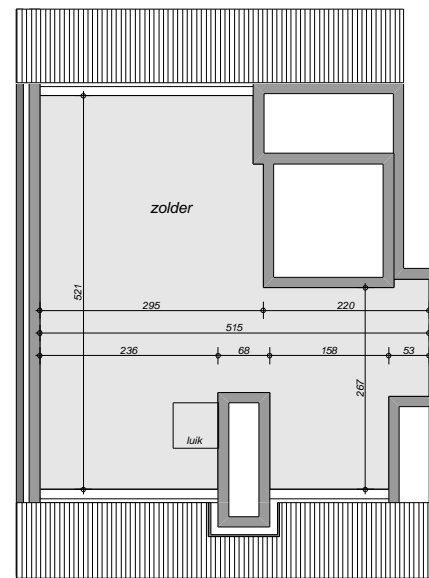
appartement: 84.75 m<sup>2</sup>

**netto oppervlakte**

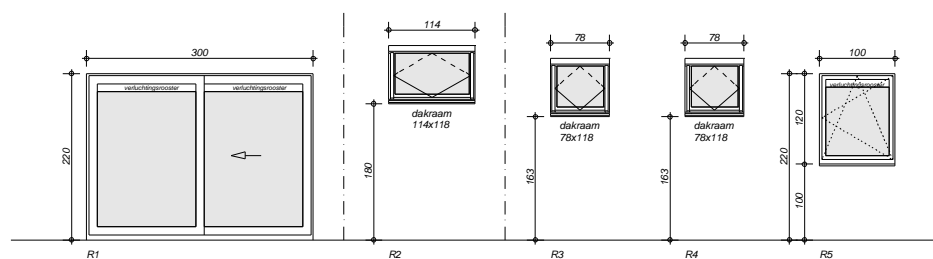
appartement: 75.89 m<sup>2</sup>  
terras: 5.61 m<sup>2</sup>



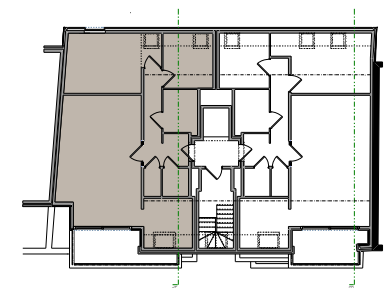
**GRONDPLAN 1-100**



**ZOLDER**



**RAMENSTAAT**



GEMEENTE: Genk  
PROVINCIE: LIMBURG  
BOUWHEER: J & M INVEST bvba

NIEUWSTRAAT - bouwen van 8 appartementen

DATUM: 14 OKTOBER 2009

**AXIS ARCHITECTEN & INGENIEURS**  
Steven Broos Rik Herelikka Jos Plessers  
Steinweg 26 3203 Diest T 013 33 46 13  
Sint - Truidenseweg 57b 3500 Hasselt T 011 23 46 24