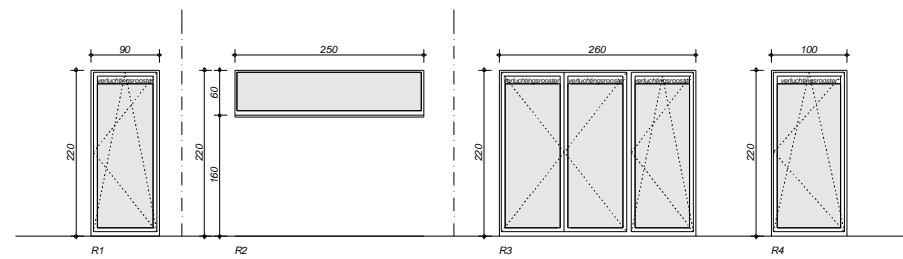


**GRONDPLAN 1-100**



**RAMENSTAAT**

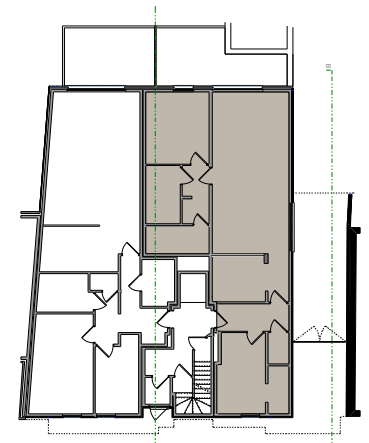
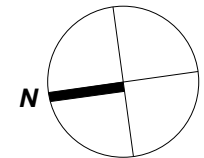
**GELIJKVLOERS**  
**APPARTEMENT 0.2**

**bruto oppervlakte**

appartement: 107.82 m<sup>2</sup>

**netto oppervlakte**

appartement: 97.32 m<sup>2</sup>  
terras: 17.30 m<sup>2</sup>  
tuin: 51.93 m<sup>2</sup>



GEMEENTE: Genk  
PROVINCIE: LIMBURG  
BOUWHEER: J & M INVEST bvba

NIEUWSTRAAT - bouwen van 8 appartementen

DATUM: 14 OKTOBER 2009